



ZMARTBUILD WALL

BY NXTBLOC

IT'S ABOUT TIME

Build Onward & Upward With
The Next-Generation AAC Wall



A BLEND OF TWO CONSTRUCTION PIONEERS

Siam Cement Bigbloc Construction Technologies Private Limited

ZMARTBUILD WALL By NXTBLOC, a joint venture between SCG International & BIGBLOC Construction Limited, brings a new era of world-class walling solutions by carrying forward our parent companies' proud legacies.



SCG Group from Thailand carries over 110 years of expertise in delivering end-to-end cement and construction solutions around the world. They continuously innovate to offer sustainable services.

With a strong vision, SCG brings in cutting-edge technologies to elevate India's construction sector. With innovations such as Drone Solutions, 3D Printing, Ultra-High Performance Concrete, Building Information Modelling (BIM) and more, they continue to reshape the Indian construction sector.

With innovation and customer-centricity at heart, they change the landscape by creating complex structures with ease, reducing waste, and promoting a more sustainable & greener environment.

As a fellow pioneer in sustainable building solutions, BIGBLOC from India, played a pivotal role in the creation of the ZMARTBUILD WALL By NXTBLOC.

BIGBLOC Construction Limited, since 2009, has been dedicated to advancing construction and infrastructure by providing superior building materials with a blend of strength and lightweight, creating a unique mix. Their unwavering commitment to green building solutions has established them as leaders in the industry.

By perfectly balancing expertise, technology, and vision, they build a better, more eco-friendly future of construction at every step.



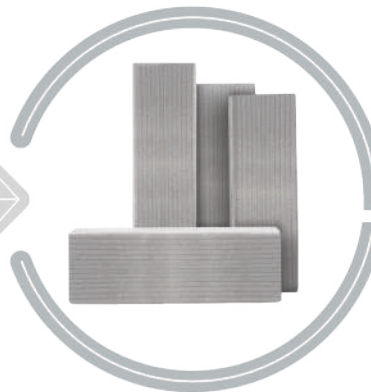
With a blend of innovation and sustainability, ZMARTBUILD WALL By NXTBLOC sets its sights on a tomorrow filled with endless possibilities, to shape a future that is brighter, eco-friendly, and suitable for all.

IT'S ABOUT TIME

ZMARTBUILD WALL By NXTBLOC answers the need of the hour. When the situation calls for faster completion & a long-lasting solution, our AAC Wall rises to meet the need. That is why we say, "It's About Time". Because the time has come to advance higher, further & faster.



Bricks



AAC Lightweight Block



ZMARTBUILD WALL By NXTBLOC

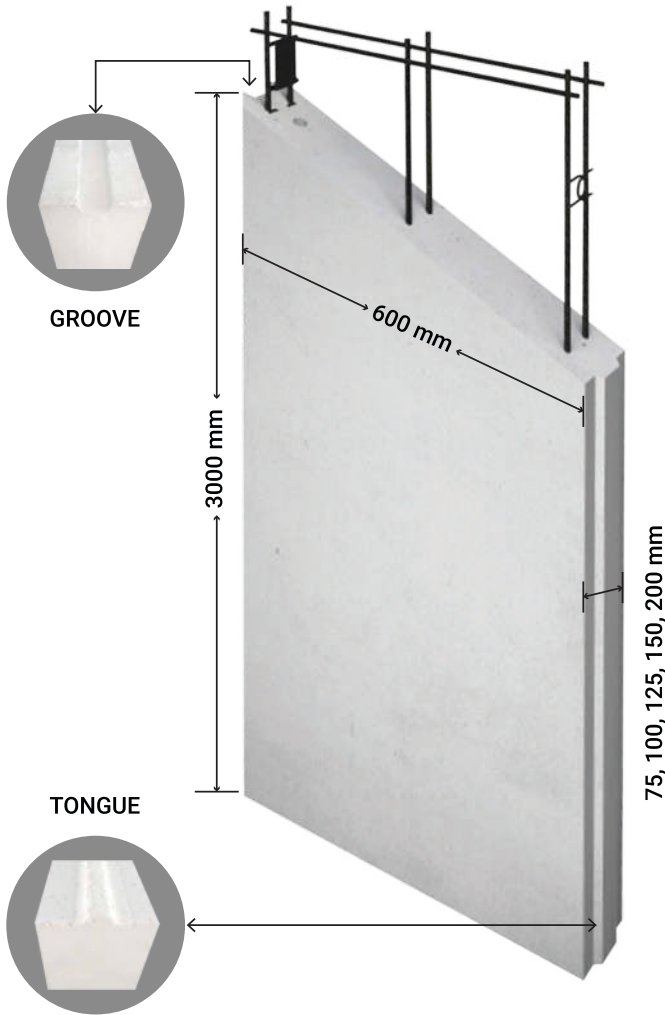


ZMARTBUILD WALL By NXTBLOC is a lightweight and steel-reinforced wall, conforming to the Indian Standards set under IS 6072.

ZMARTBUILD WALL By NXTBLOC comes equipped with a tongue and groove to provide ordinary on-site installers with easy installation.

It is suitable for both internal and external non-load-bearing walls.

PRODUCT ADVANTAGES



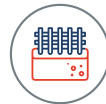
Increased Carpet Area:

Slim & sturdy walls take up less space



Faster Installation:

4x faster project completion than AAC Blocks



Steel-reinforced:

For flexural strength, safety & durability



Low Finishing Cost:

Saves total cost by requiring less labour & time



Fire Resistant:

Is non-combustible & resistant for up to 4 hours



Thermal & Acoustic Insulation:

Excellent at noise reduction & slowing heat transfer



Eco-friendly:

Reduces the consumption of water during installation



Lightweight:

Yet gives superior strength

Parameters	Values				
Thickness (mm)	75	100	125	150	200
Width (mm)	600	600	600	600	600
Length (mm)(interval of 100 mm)	3000	3000	3000	3000	3000
Number of steel reinforcements	2	2	2	2	2
Tongue and Groove	Yes	Yes	Yes	Yes	Yes

PRODUCT SPECIFICATIONS

Specifications	 Red Brick	 Drywall	 Sandwich Wall	 AAC Block	 ZMARTBUILD WALL By NXTBLOC
Dry Density (kg/m ³)	1950	600 - 800	1000	550 - 650	550 - 650
Working Density (kg/m ³)	2000	NA	1150	600 - 700	600 - 700
Wind Load (kg/m ²)	Up to 150	Up to 160	Up to 120	Up to 160	Up to 180
Compressive Strength (N/mm ²)	>3.5	>4	>4	>4.2	>4.2
Water Absorption (By Volume)	<43%	<90%	<33%	<33%	<33%
Fire Resistance	1.5 hrs (100 mm)	1 hr (100 mm)	2 hrs (75 mm)	4 hrs (100 mm)	2.5 hrs for 75 mm 4 hrs for 100 mm
Thermal Conductivity (W/m.K)	0.81	0.25	0.21	0.16	0.16
STC Rating (dB)	50 (230 mm)	40 (100 mm)	35 (100 mm)	38 - 43 (100 mm)	38 - 43 (100 mm)
Reinforced Steel Tensile Strength (N/mm ²)	NA	NA	NA	NA	>500
Weight (kg/m ²)	185 (115 mm)	20	54 (75 mm)	70 (100 mm)	53 for 75 mm 70 for 100 mm

ACCESSORIES



Panel Lifting Tool



Anchor Fastener (Bolt)



Cleaning Brush



Drill Machine



Grinding Machine



Hammer Machine



Hammer



L-clip



Measuring Tape



Mortar Mixer



Nylon Rope



Panel Cutter Machine



Plastering Trowel



Plumb Bob



Right Angle



Spirit Level



Tapping Screw



Wedge



Wrench



Thin Bed Mortar

HOW TO MOVE THE WALL

1



Make sure that there is no obstruction beside the truck

2



Check if the packaging is intact to make sure that it will not fall when lifted

3



Insert soft belts under the pallets at the designed positions

4



Get the wall inside the building by using a hand-lift to lift the walls from the loading area

PRE-INSTALLATION

1



Check the sizes & quantities of the ZMARTBUILD WALL By NXTBLOC

2



Check the construction drawing of the wall layout to install

3



Check your tools & equipment

HOW TO INSTALL

1 Clean & mark the wall alignment by using chalk tape and move the wall to the marked point



2 Mix Thin Bed Mortar and apply it to the structure column



3 Lift the wall and push it to attach to the column



4 Insert a foam sheet between the floor and the top of the wall



5 Use a lever to lift the wall, until the top of the wall reaches the upper floor, and then insert a wooden wedge under the wall



6

Fasten the wall to the floor using a steel angle on the upper and lower sides of the wall with a dash fastener and steel screws



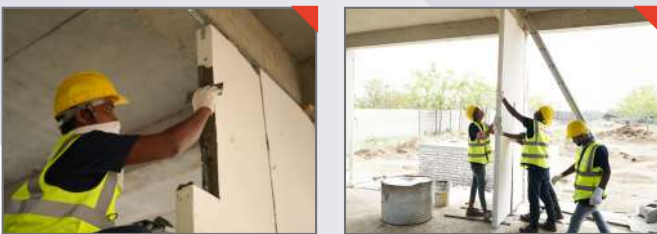
7

Apply Thin Bed Mortar to the side of the first wall, then lift the next wall to attach it, and repeat the steps



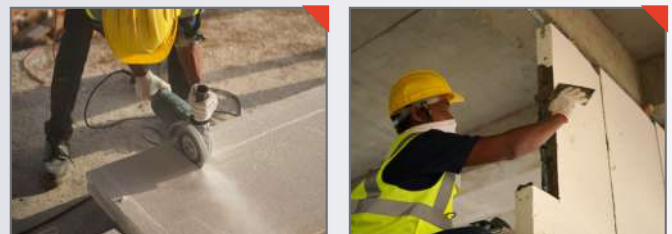
8

Continue to install the walls until the gap can be closed with the end wall



9

Measure the gap and cut the last wall for it to fit in the leftover space and install it



10

Fill the gap under the walls with Sand Cement Mortar



11

Fill the gaps between walls with Thin Bed Mortar, then rub with sandpaper grit 400, after the mortar dries



12

A. Finish the surface with a skim coat, then rub with sandpaper grit 200, for the internal walls
B. Finish the surface with AAC plastering mortar for the exterior walls



13

Your ZMARTBUILD WALL By NXTBLOC installation is complete



PROJECT GALLERY

INDIA



Rajsthali Resort
Kukas, Jaipur, Rajasthan



Centre For Electronic Governance (CEG)
Jaipur, Rajasthan



Vivacity Mall
Jagatpura, Jaipur, Rajasthan



PUNO
Adventure & Trampoline
Jaipur, Rajasthan



V G Collector Residence
Jaipur, Rajasthan

THAILAND



Four Seasons
Private Residences
Bangkok



Siam Paragon
Bangkok



Miami Bangpu
Samut Prakan



Koncept Warehouse
Surin



The Tree Condo
Bangkok

SAFETY FIRST

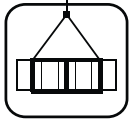
CAUTIONS

To transfer ZMARTBUILD WALL



Move the pallet by using a hand-lift or a forklift and check the packaging before moving

- ✓ The pallet strap is tight
- ✓ Pallets must be in good condition
- ✓ Move one pallet at a time
- ✓ Do not move the pallet on a rough area or areas with a slope higher than 36 degrees as it is a fall-risk



Move the pallet by using a crane and check the packaging before moving

- ✓ The pallet strap is tight
- ✓ Pallets must be in good condition
- ✓ Move one pallet at a time



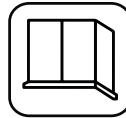
Move the pallet by hand

- ✓ Beware of objects that you could trip on and check if the panels are sturdy
- ✓ Lift the product in the right manner to avoid muscle injuries
- ✓ At least two people are required to lift the wall
- ✓ Handle the product with care to avoid damage and injuries

Installation guidelines



At least two people are required to install the ZMARTBUILD WALL By NXTBLOC. Study and follow the technical installation manual.

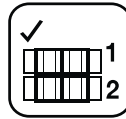


ZMARTBUILD WALL By NXTBLOC is designed & instructed to be used for wall partition only and not as a load-bearing structure.

Storage



Avoid keeping the products outdoors for over 30 days to prevent any damage caused by humidity and weather.



Do not stack more than two packs. Maintain a height of less than 1.7 m.

SAFETY



Wear safety glasses to prevent dust from entering your eyes



Wear a dust mask to prevent inhaling harmful dust and fumes



Wear safety work clothes to protect yourself from numerous hazards



Wear work gloves to save your hands from severe cuts



Wear safety shoes to maintain balance and carry materials with ease



Wear a helmet to safeguard your head from potential hazards



Don't rub but rinse your eyes with water if dust enters and get medical attention if irritation persists

Head Office

906, Rajhans Montessa,
Dumas Road, Magdalla,
Surat, Gujarat - 395007, India

Ahmedabad Office

B-106, Shilp Corporate Park,
Rajpat Rangoli Road,
Near Rajpat Club,
S G Highway, Ahmedabad,
Gujarat - 380054, India

Mumbai Office

609, A Wing, Corporate Avenue,
Sonawala Road, Goregaon (E),
Mumbai - 400063, India

Plant Location (Kheda)

Survey No. 234/235/236,
Village - Ramosadi, Kapadvanj,
Dist. Kheda, Gujarat - 387620, India

Tel (IN): 079-480-62002

Web : www.zmartbuild-nxtbloc.com

Email : info@zmartbuild-nxtbloc.com



SCG
International



ZMARTBUILD  **WALL**
BY **NXTBLOC**